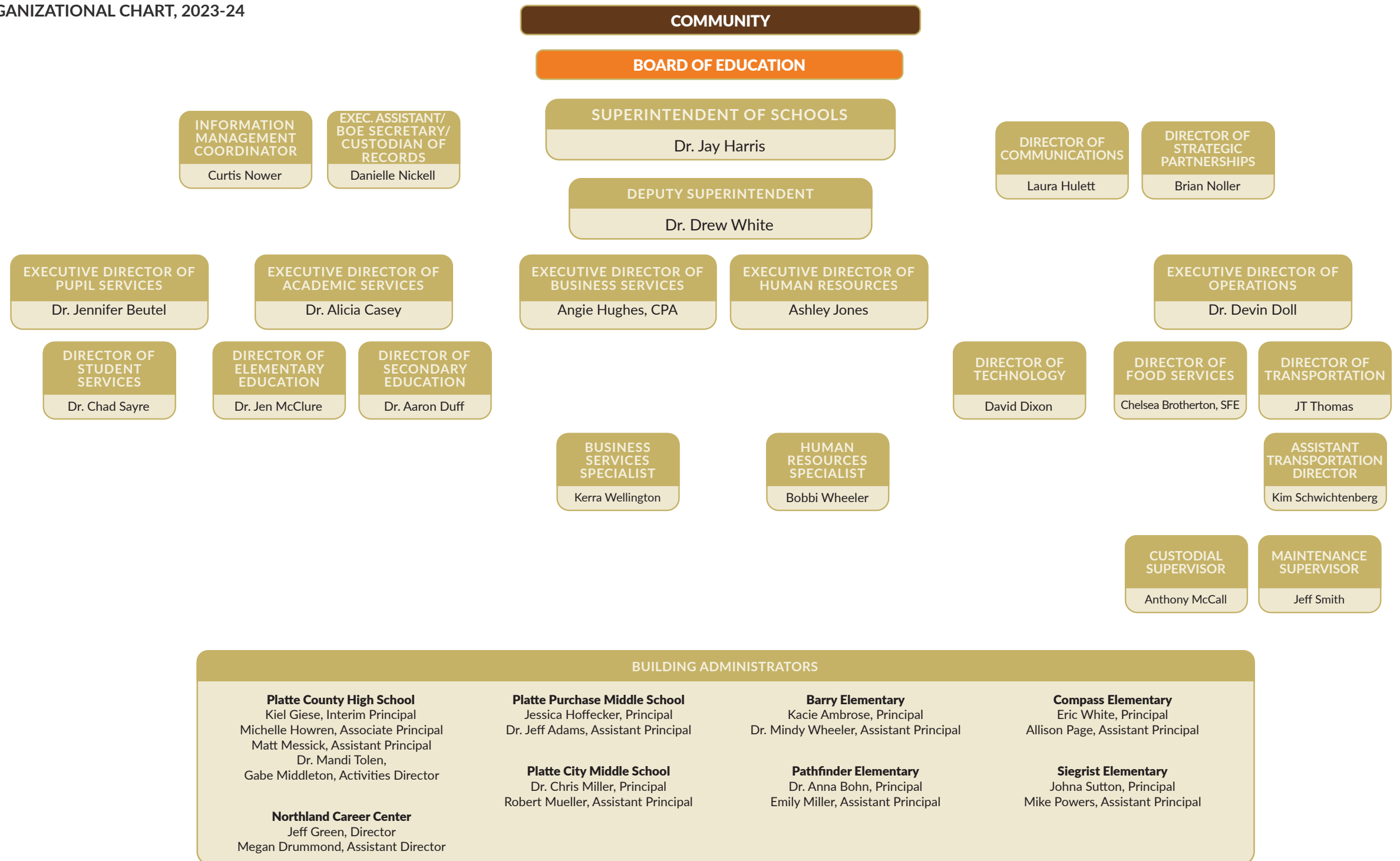


ORGANIZATIONAL CHART, 2023-24



COMMUNITY

BOARD OF EDUCATION

SUPERINTENDENT OF SCHOOLS
Dr. Jay Harris

DEPUTY SUPERINTENDENT
Dr. Drew White

INFORMATION MANAGEMENT COORDINATOR
Curtis Nower

EXEC. ASSISTANT/BOE SECRETARY/CUSTODIAN OF RECORDS
Danielle Nickell

DIRECTOR OF COMMUNICATIONS
Laura Hulett

DIRECTOR OF STRATEGIC PARTNERSHIPS
Brian Noller

EXECUTIVE DIRECTOR OF PUPIL SERVICES
Dr. Jennifer Beutel

EXECUTIVE DIRECTOR OF ACADEMIC SERVICES
Dr. Alicia Casey

EXECUTIVE DIRECTOR OF BUSINESS SERVICES
Angie Hughes, CPA

EXECUTIVE DIRECTOR OF HUMAN RESOURCES
Ashley Jones

EXECUTIVE DIRECTOR OF OPERATIONS
Dr. Devin Doll

DIRECTOR OF STUDENT SERVICES
Dr. Chad Sayre

DIRECTOR OF ELEMENTARY EDUCATION
Dr. Jen McClure

DIRECTOR OF SECONDARY EDUCATION
Dr. Aaron Duff

DIRECTOR OF TECHNOLOGY
David Dixon

DIRECTOR OF FOOD SERVICES
Chelsea Brotherton, SFE

DIRECTOR OF TRANSPORTATION
JT Thomas

BUSINESS SERVICES SPECIALIST
Kerra Wellington

HUMAN RESOURCES SPECIALIST
Bobbi Wheeler

ASSISTANT TRANSPORTATION DIRECTOR
Kim Schwichtenberg

CUSTODIAL SUPERVISOR
Anthony McCall

MAINTENANCE SUPERVISOR
Jeff Smith

BUILDING ADMINISTRATORS

Platte County High School
Kiel Giese, Interim Principal
Michelle Howren, Associate Principal
Matt Messick, Assistant Principal
Dr. Mandi Tolen,
Gabe Middleton, Activities Director

Northland Career Center
Jeff Green, Director
Megan Drummond, Assistant Director

Platte Purchase Middle School
Jessica Hoffecker, Principal
Dr. Jeff Adams, Assistant Principal

Platte City Middle School
Dr. Chris Miller, Principal
Robert Mueller, Assistant Principal

Barry Elementary
Kacie Ambrose, Principal
Dr. Mindy Wheeler, Assistant Principal

Pathfinder Elementary
Dr. Anna Bohn, Principal
Emily Miller, Assistant Principal

Compass Elementary
Eric White, Principal
Allison Page, Assistant Principal

Siegrist Elementary
Johna Sutton, Principal
Mike Powers, Assistant Principal